



FOR SALE | SPRINGBANK, AB

Artists View Park

- **Executive lots** designated for higher end product types
- Located as part of a **unique acreage community** of Artists View Park, offering it's residents quiet living, stunning mountain views combined with excellent access to city conveniences.
- **Beautiful location** - adjacent to the Calgary city limits, minutes from Calgary Olympic Park and numerous retail and entertainment amenities as well as form some of Alberta's finest private and public schools.

Springbank, AB

Rural living with Big City Convenience

Springbank is a rural community within the Municipal District of Rockyview located just west of Calgary's city limits and offering country living on the edge of Alberta's majestic Foothills.

Located east of Highway 22, south of the Bow River. Both the Trans-Canada Highway and Lower Springbank Road (north of Highway 8) connect Springbank to Calgary.

Once a rural community, Springbank has evolved into a thriving community offering exclusive acreage properties with quick and easy access to "city amenities".

SITE PLAN

22 LOTS

LAND SIZE

88.44 ACRES

LEGAL DESCRIPTION

PLAN 7510024
BLOCK 2

CURRENT ZONING

A-GEN

PROPERTY TYPE

LAND-SF RESIDENTIAL

LOCATION

ROCKY VIEW COUNTY

SALE PRICE

\$7,392,000



- 9 MIN

WINSPORT
- 8 MIN

CO-OP WEST SPRINGS
- 7 MIN

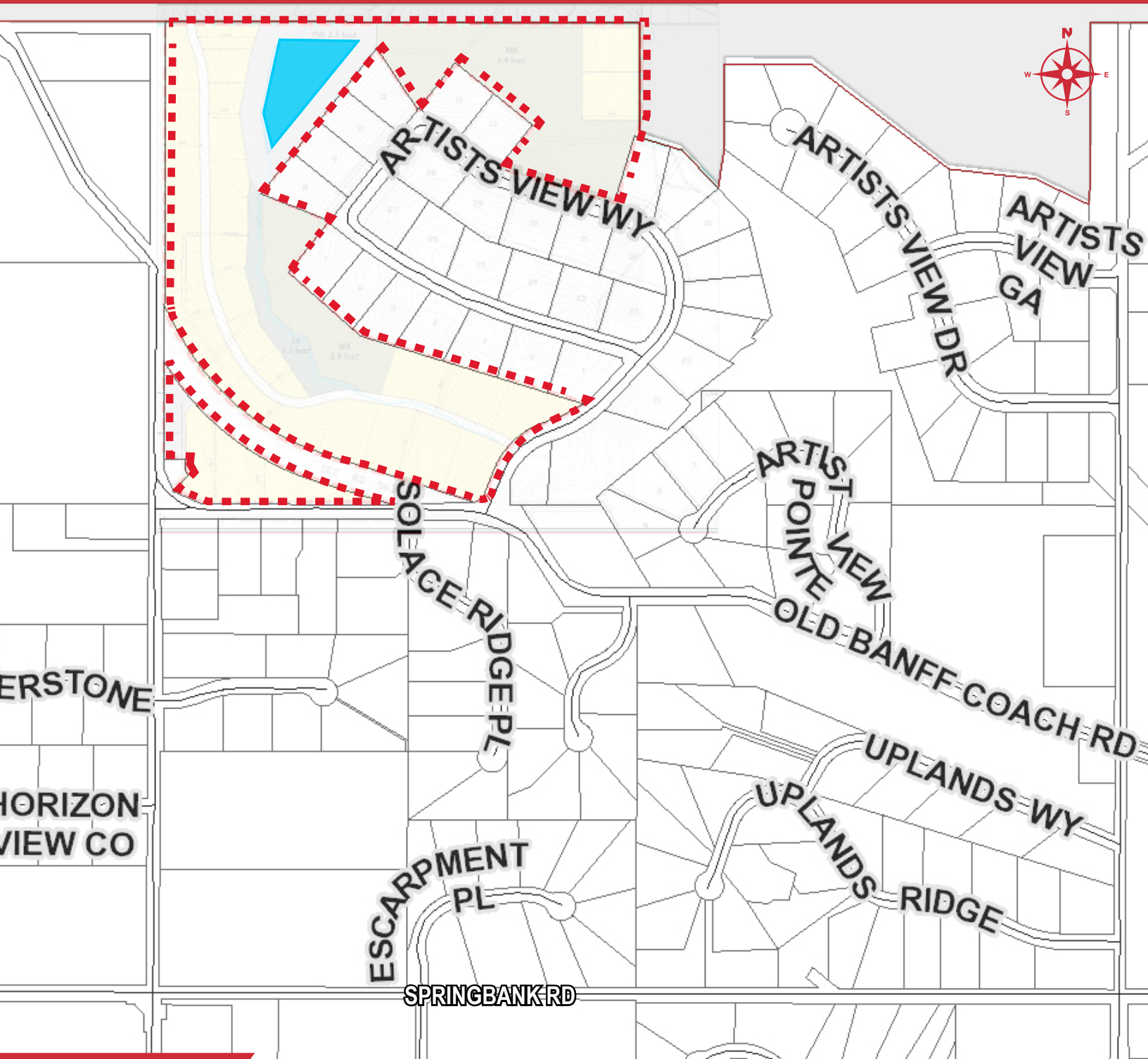
TRUMAN WEST DISTRICT
- 9 MIN

TOP RATED SCHOOLS
- 15 MIN

MICKELSON NATIONAL GOLF CLUB
- 21 MIN

DOWNTOWN
- 1H 8 MIN

BANFF, ALBERTA



CONTACT US

HARVEY RUSSELL

Senior VP/Principal

hrussell@naiadvent.com

403-620-0667

THIS BROCHURE IS INTENDED FOR INFORMATION PURPOSES ONLY AND SHOULD NOT BE RELIED UPON FOR ACCURATE FACTUAL INFORMATION BY THE RECIPIENTS HEREOF. THE INFORMATION CONTAINED HEREIN IS BASED ON INFORMATION WHICH NAI ADVENT DEEMS RELIABLE, HOWEVER, NAI ADVENT ASSUMES NO RESPONSIBILITY FOR THE DEGREE OF ACCURACY OF SUCH INFORMATION, NOR DOES NAI ADVENT REPRESENT OR WARRANT THE INFORMATION CONTAINED HEREIN. RECIPIENTS HEREOF SHOULD CONDUCT THEIR OWN INVESTIGATIONS TO DETERMINE THE ACCURACY OF INFORMATION CONTAINED HEREIN. THE INFORMATION CONTAINED HEREIN IS SUBJECT TO CHANGE WITHOUT NOTICE.

*Lot outline on all pages is approximate.

